



**CITY OF LOYALTON**

605 School Street, Loyalton, CA. 96118 Telephone: (530) 993-6750

**THIS IS NOT AN ORDER** Please state bid prices and delivery terms if applicable for the following materials or services subject to the general terms and conditions of this Bid as written.

DATE: October 1, 2018	DEPARTMENT Public Works	SUBJECT: / Hill Street Cemetery Road Site Fencing	
DELIVERY POINT: See Exhibit B	DELIVERY TERMS: See Exhibit B		
Bids must be received by the City of Loyalton on or before:	TIME: 2:00 PM	DATE: October 17, 2018	
<b><u>SUBMIT ALL BIDS TO:</u></b> City of Loyalton P.O. Box 128 Loyalton California 96118	DATE OF BID OPENING:  October 17, 2018	PLACE OF BID OPENING:  605 School Street Loyalton, CA. 96118	TIME OF BID OPENING:  2:00 PM

**INSTRUCTIONS TO BIDDERS**

1. Bids **Must** be Submitted in a **Sealed Envelope** with the Notation of “Hill Street Cemetery Road Site Fencing”
2. Bidders are responsible to monitor the City of Loyalton’s Web Page for any and all amendments: <https://www.cityofloyalton.org>
3. If you have any questions, contact Daniel B. Bastian at [bastianengineeringinc@gmail.com](mailto:bastianengineeringinc@gmail.com)
4. See Exhibit A for “Terms and Conditions”
5. See Exhibit B for “Specifications and Locations”
6. See site fencing location and details, Sheets A-C.
7. Submit the Completed Bid Packet to the City of Loyalton, specified herein.

City of Loyalton Hill Street Cemetery Road  
Site Fencing Bid

# EXHIBIT A

## City of Loyalton TERMS and CONDITIONS

**BIDS:** Bids, modifications and requests for withdrawal thereof, received after the due date and time will not be considered.

All bids must be submitted in sealed envelopes. Bid envelopes must be identified as per instructions set forth in the request transmittal. The entire bid packet needs to be submitted with your bid.

Prices for each bid item shall be inserted in ink or typewritten on the form. Penciled submittals will be a basis for rejection.

It is City policy to specify brand or make for descriptive purposes only. Further, where brand or make is specified in the request, an "Equal" will be considered. However, it will be the responsibility of the bidder offering an alternate brand to make or prove its equality, and where possible, to state brand and give catalogue reference. Unless the bidder states that he/she is offering an alternate, he/she will furnish the brand or make specified in the request.

The City does not specify brand, only that performance and specifications be met.

**AWARD:** Award shall be made to the lowest responsible bidder provided, however, quality offered, installation terms, and service reputation of the bidder may be taken into consideration in determining the lowest responsible successful bidder. It is anticipated that the Governing Board will award fencing contract at the end of October 2018 of first part on November 2018.

**TAX:** The total bid amount must include sales tax.

**The City reserves the right to reject any and all bids and to waive informalities and minor irregularities in bids.**

# EXHIBIT B

## City of Loyalton Hill Street Cemetery Road Site Fencing Bid Specifications

City of Loyalton is interested in obtaining prices for site fencing at the City Cemetery, Loyalton CA. Please furnish your bid specifying your **lump sum price for chain link fencing**. The location is shown on the attached Sheets A & B.

### SPECIFICATION FOR SITE PERIMETER FENCING

#### 1. GENERAL:

1.1. These specifications for the City of Loyalton Cemetery site perimeter fencing are for new fencing to add to the partial existing fencing. Fencing to be installed per the site plan fencing drawing and under the direction of the City Staff.

#### 1.2 REFERENCES

##### A. General:

1. The following documents form part of the Specifications to the extent stated. Where differences exist between codes and standards, the one affording the greatest protection shall apply.
2. Unless otherwise noted, the referenced standard edition is the current one at the time of commencement of the Work.

B. FS RR-F-191/1C Fencing, Wire and Post Metal (Chain-Link Fence Fabric)

C. State of California - California Department of Transportation (CALTRANS):  
1. Standard Specifications: Chapter 80-4 excluding Section 80-4.04

D. American Society for Testing and Materials (ASTM)

1. ASTM A123 / A123M Standard Specification for Zinc (Hot-Dip Galvanized) Coatings on Iron and Steel Products
2. ASTM C94 / C94M Standard Specification for Ready-Mixed Concrete
3. ASTM D 412 Standard Test Methods for Vulcanized Rubber and Thermoplastic Elastomers-Tension
4. ASTM D 792 Standard Test Methods for Density and Specific Gravity (Relative Density) of Plastics by Displacement
5. ASTM D 1499 Standard Practice for Filtered Open-Flame Carbon-Arc Exposures of Plastics
6. ASTM D 2240 Test Method for Rubber Property—Durometer Hardness
7. ASTM F 668 Standard Specification for Polyvinyl Chloride (PVC) and Other Organic Polymer-Coated Steel Chain-Link Fence Fabric

#### 2.0 MATERIALS

- A. Posts and Braces: Section 80 of CALTRANS 2015 Specifications.
- B. Fabric: Section 80 of CALTRANS 2015 Specifications

- C. Accessories: Section 80 of CALTRANS 2015 Specifications

### 3.0 CONCRETE MIX

- A. Concrete: ASTM C 94; type II Portland Cement; 2500 psi at 28 days; 3-inch (75 mm) slump; 3/4-inch (20 mm) maximum size aggregate.

### 4.0 COMPONENTS

- A. Line Posts: 2.375-inch (59 mm) outside diameter, Schedule 40 galvanized steel pipe or galvanized "H" columns weighing not less than 2.7 lb./ft (13.18 kg/m<sup>2</sup>).
- B. Corner and Terminal Posts: 2.875-inch (73 mm) outside diameter, Schedule 40 galvanized steel pipe.
- C. Top, Bottom and Brace Rail: 1.660-inch (42.16 mm) outside diameter, plain end, sleeve coupled galvanized steel pipe.
- D. Tension Bars: 3/16 inches by 3/4-inch (4.76 mm by 20 mm) galvanized steel flat bars.
- E. Caps: Cast steel or malleable iron, galvanized, sized to post dimension, set-screw retained.
- F. Fittings: Sleeves, bands, clips, rail ends, tension bars, fasteners and fittings shall be galvanized steel.
- G. Extension Arms: Cast steel, to accommodate 3 strands of barbed wire, single arm, 12-inches (305 mm) high (measured vertically) above the top edge of the fence fabric, sloped to 45 degrees.
- H. Galvanized Surfaces: Galvanize surfaces in accordance with ASTM A 123, with a coating of at least 1.20 oz/sq. ft.
- I. Accessories and Components: Same finish as fabric.

### 5.0 DRAWINGS:

- A. See site plan drawing and fence details drawing, RSPA 85.

### 6.0 INSTALLATION

- A. Install framework, fabric, and accessories in accordance with section 80 of CALTRANS 2015 Specifications.
- B. Install security fence of 6-foot fabric height as shown on Drawings.
- C. Space line posts at intervals not exceeding 10 feet (3 m).
- D. Set posts plumb, in concrete footings with top of footing 6 inch above finish grade. Slope top of concrete for water runoff. Footings for line end and corner posts are to be 8 inches diameter by 3 feet deep below finish grade.
- E. Provide top rail through line-post tops and splice with 7-inch (178 mm) long rail sleeves.
- F. Brace each corner post back to adjacent line post with horizontal center brace rail and diagonal truss rods. Install brace rail, one bay from end and gate posts.
- G. Install center and bottom brace rail on corner leaves.

- H. Stretch fabric between terminal posts or at intervals of 100 feet (30,5 m) maximum, whichever is less.
- I. Position bottom of fabric to no more than 2 inches (50 mm) touching dirt finish grade.
- J. Fasten fabric to top rail, line posts, braces, and bottom tension wire with 11-AWG galvanized wire ties 24 inches (610 mm) maximum on centers.
- K. Attach fabric to end, corner, and gateposts with tension bars and tension bar clips.
- L. Install bottom rail supported at each line and terminal post in such a manner that a continuous brace between posts is formed.

## **7.0 CONSTRUCTION WASTE MANAGEMENT**

- A. Conform with Section 13-4 of the CALTRANS 2015 Specifications.
  - B. Before concrete pours, designate locations or uses for excess concrete and a location for clean out water from concrete trucks. Designated locations shall meet environmental standards and conform with Section 13-4.03 of CALTRANS 2015 Specifications.
-

## BID SHEET

Provide bid cost for chain link fencing installed at City of Loyaltan Cemetery. Cost must include all labor, equipment costs, fees, services and all applicable taxes.

The City of Loyaltan reserves the right to reject any and all bids. To evaluate our proposal capabilities, please furnish a total cost:

Description	Bid Amount (numerical)	Bid Amount (words)
Remove and replace 60 linear feet of fencing installed (tax included)		
Total fencing		

**Along with the bid sheet, please provide the following as Attachments or Enclosures to this Bid Sheet:**

- A proposed work schedule including working

days Name & Address of BIDDER (please print):

Name:

Title:

Address:

Phone:

Cell Phone:

Email:

Signature:

Date:

# City of Loyalton Hill Street Cemetery Road Site Fencing Bid

## **PROTESTS**

Any directly affected party who is aggrieved in connection with the solicitation or award of a purchase order or contract issued through a formal sealed bid procedure may protest the procurement action taken. Such protest must be filed in writing with:

City of Loyalton  
P.O. Box 128  
Loyalton  
California, 96118

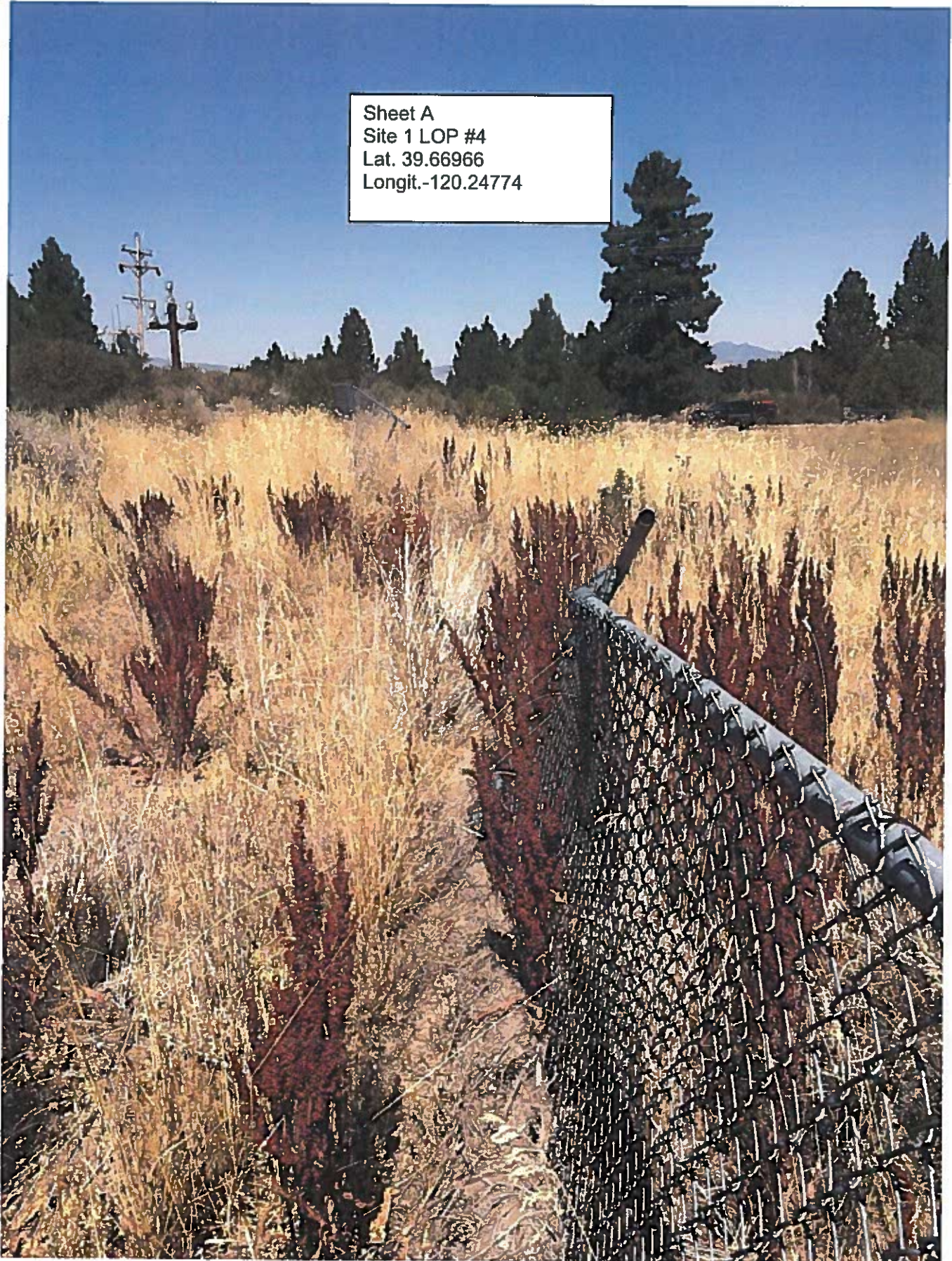
Protests must be filed in writing within five (5) working days from the time of the occurrence generating the protest. Protests received after this time will not be considered. Any protest shall include the following information:

1. The date action taken resulting in a protest, and
2. Identify the material issue, including a detailed explanation of the basis for the protest and the remedy sought. Specification related protests must be fully supported by technical data test results, or other pertinent information, that the substitute offered is equal to or better than the specification requirement.



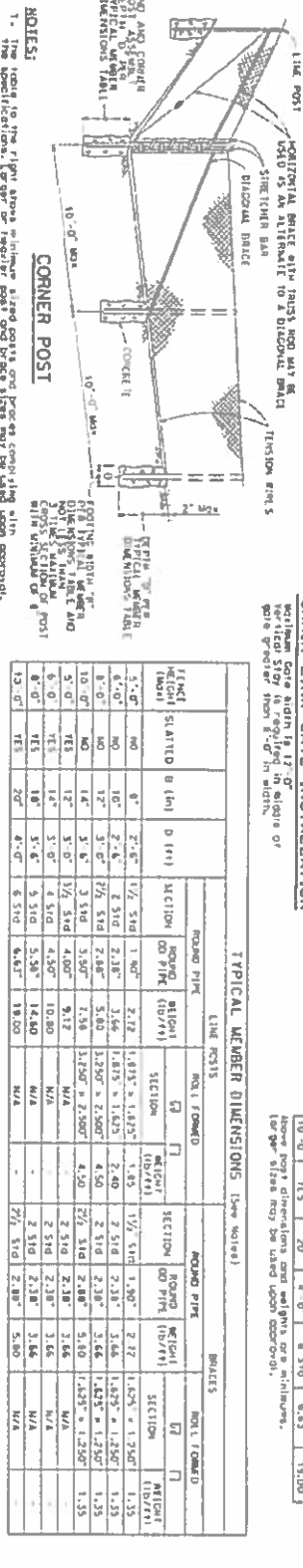
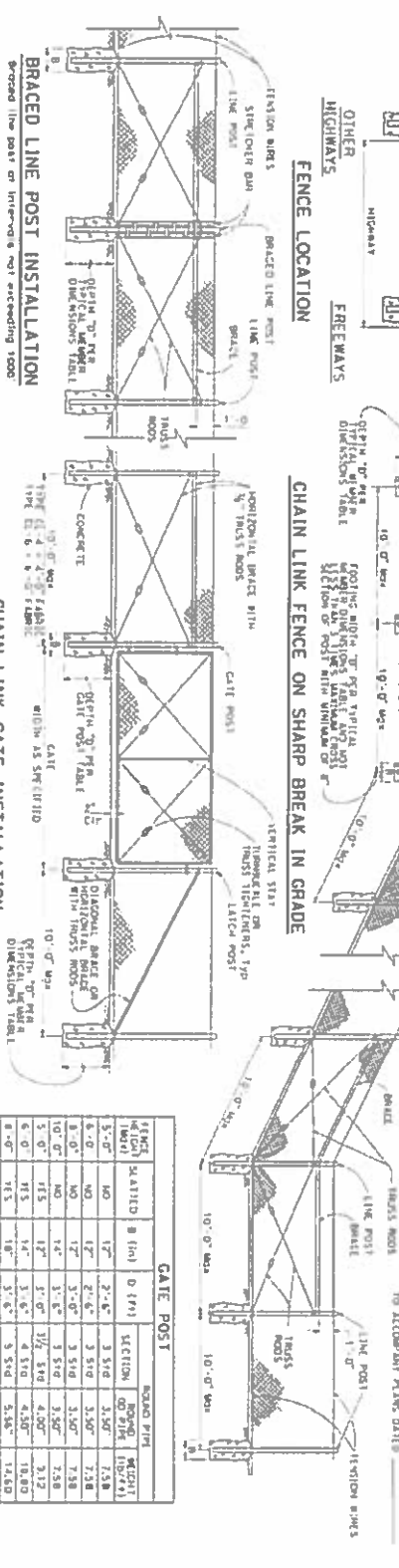


Sheet A  
Site 1 LOP #4  
Lat. 39.66966  
Longit. -120.24774





© 2013 California Department of Transportation  
All rights reserved.



- NOTES:**
1. Refer to the right of way in the right of way map and project drawings for the location of the fence. The fence shall be installed in accordance with the typical member dimensions table.
  2. Sections shown in the typical member dimensions table are for reference only. The actual dimensions of the fence shall be determined by the project engineer.
  3. Options available for the fence shall be determined by the project engineer.
  4. Options available shall be uniform on any one project.
  5. Details of the fence shall be determined by the project engineer.
  6. See Standard Plan RSP A85 for Braced, Striker Bar, and Tensile Tightener Details.

**TYPICAL MEMBER DIMENSIONS (See notes)**

FENCE TYPE	SLATED B (in)	D (in)	ROAD PIPE				ROUND PIPE				
			SECTION (lb/ft)	SECTION (lb/ft)	SECTION (lb/ft)	SECTION (lb/ft)	SECTION (lb/ft)	SECTION (lb/ft)	SECTION (lb/ft)	SECTION (lb/ft)	
5'-0"	NO	8"	2'-6"	1/2" STD	1.90"	2'-12"	1.625" x 1.625"	2'-12"	1.625" x 1.625"	1.35	1.35
6'-0"	NO	10"	2'-6"	2" STD	3.66	2'-12"	1.625" x 1.625"	2'-12"	1.625" x 1.625"	1.35	1.35
8'-0"	NO	12"	3'-0"	2 1/2" STD	5.80	2'-12"	1.625" x 1.625"	2'-12"	1.625" x 1.625"	1.35	1.35
10'-0"	NO	14"	3'-6"	3" STD	7.56	2'-12"	1.625" x 1.625"	2'-12"	1.625" x 1.625"	1.35	1.35
5'-0"	YES	12"	3'-0"	3/2" STD	4.00"	9'-12"	N/A	N/A	N/A	N/A	N/A
6'-0"	YES	14"	3'-0"	4" STD	4.50"	10'-0"	N/A	N/A	N/A	N/A	N/A
8'-0"	YES	18"	3'-6"	5" STD	5.50"	12'-0"	N/A	N/A	N/A	N/A	N/A
10'-0"	YES	20"	4'-0"	6" STD	6.50"	15'-0"	N/A	N/A	N/A	N/A	N/A

STATE OF CALIFORNIA  
DEPARTMENT OF TRANSPORTATION  
NO SCALE  
**CHAIN LINK FENCE**  
**REVISOR STANDARD PLAN RSP A85**

REVISED STANDARD PLAN RSP A85

TO ACCORDANT PLANS, DATE:

July 21, 2011

7/21/2011

7/21/2011

7/21/2011

7/21/2011

2015 REVISED STANDARD PLAN RSP A85