

# CITY OF LOYALTON

## BECKWITH ROAD PAVEMENT REPAIR

### LOYALTON, CALIFORNIA

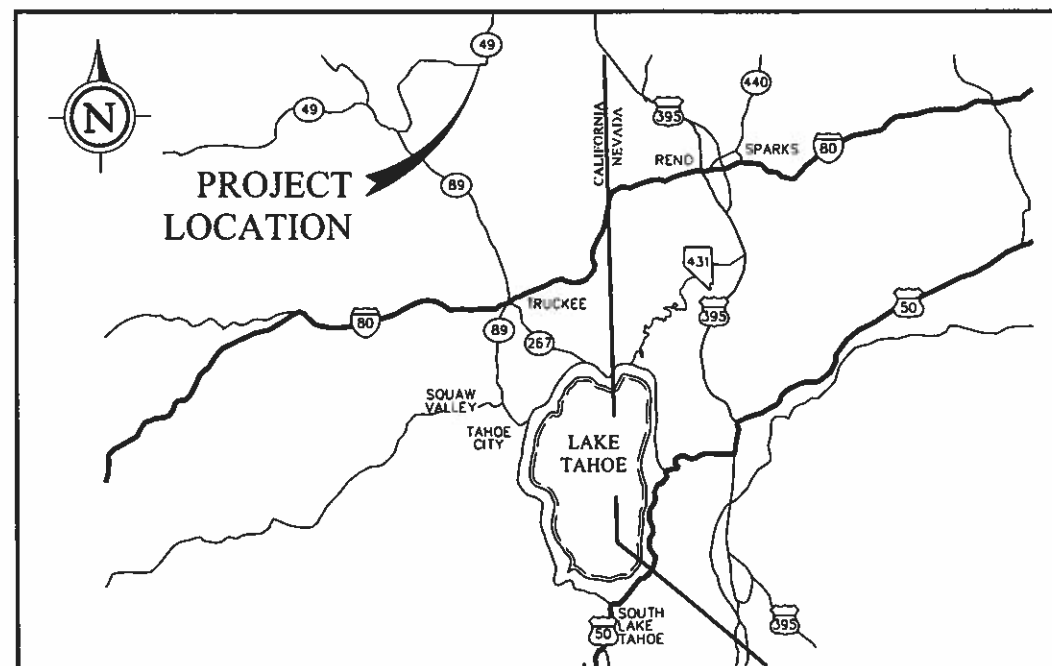
T.21N, R.15E, SECTION 13, MDM

**OWNER:**  
**CITY OF LOYALTON**  
 605 SCHOOL STREET  
 P.O. BOX 128  
 LOYALTON, CA 96118  
 PHONE: (530) 993-6750

**ENGINEER/SURVEYOR:**  
**FARR WEST ENGINEERING**  
 5510 LONGLEY LANE  
 RENO NV 89511  
 PHONE: (775) 851-4788  
 FAX: (775) 851-0766



**VICINITY MAP**  
N.T.S.



**LOCATION MAP**  
N.T.S.

INDEX OF SHEETS		
NO.	NO.	DESCRIPTION
1	G1.1	COVER SHEET, VICINITY MAP & SHEET INDEX
2	G1.2	GENERAL NOTES
3	G1.3	ABBREVIATIONS & LEGENDS
4	G1.4	KEY MAP, OVERALL SURVEY & BASELINE CONTROL
5	C1.1	PLAN SHEET
6	D1.1	DETAILS

Avoid cutting underground utility lines. It's costly.  
**Call before you Dig**  
 1-800-227-2600  
 UNDERGROUND SERVICE (USA)

FARR WEST ENGINEERING ASSUMES NO RESPONSIBILITY FOR EXISTING UTILITY LOCATIONS AND ELEVATIONS. THE UTILITIES SHOWN ON THESE DRAWINGS HAVE BEEN PLOTTED FROM THE BEST AVAILABLE INFORMATION. IT IS, HOWEVER, THE CONTRACTOR'S RESPONSIBILITY TO FIELD VERIFY THE LOCATION AND ELEVATION OF ALL UTILITIES PRIOR TO THE COMMENCEMENT OF ANY CONSTRUCTION. CONTRACTOR TO FIELD VERIFY ALL EXISTING SITE CONDITIONS PRIOR TO CONSTRUCTION. IF A CONFLICT EXISTS BETWEEN WHAT IS SHOWN ON THESE DRAWINGS AND WHAT EXISTS IN THE FIELD, THE CONTRACTOR IS TO NOTIFY THE ENGINEER IMMEDIATELY.

**60% SUBMITTAL**  
FOR REVIEW ONLY  
NOT FOR CONSTRUCTION

JOB NO. 1678	DATE MAY 2019	SCALE AS SHOWN	DESIGNED: JAL	DRAWN: DM	CHECKED: WS
REVISION	BY	DATE			
DESCRIPTION					

ONE INCH AT FULL SCALE

**FARR WEST ENGINEERING**  
 5510 LONGLEY LANE  
 RENO NV 89511  
 PHONE: (775) 851-4788  
 FAX: (775) 851-0766  
 FARRWESTENGINEERING.COM

SIGNED: X/XX/19

CITY OF LOYALTON  
 BECKWITH ROAD PAVEMENT REPAIR  
 COVER SHEET, VICINITY MAP & SHEET INDEX

SIERRA COUNTY CALIFORNIA

SHEET NUMBER  
**G1.1**  
 1 of 6

FILE SPEC: P:\Client\Projects\Loyalton, City of 442\1678 Beckwith Road Pavement Repair\5.0 Drawings\5.2 DMC\G-Sheets\_1678.dwg  
 PLOT DATE: Jun 07, 2019 - 9:15am

**GENERAL NOTES:**

1. THE APPROVED PLAN, SPECIFICATIONS, PERMIT, AND INSPECTION RECORD MUST BE ON THE JOB SITE AT ALL TIMES.
2. FOR ALL TRENCH EXCAVATIONS 5 FEET OR MORE IN DEPTH, THE CONTRACTOR SHALL OBTAIN A PERMIT FROM THE DIVISION OF INDUSTRIAL SAFETY PRIOR TO BEGINNING ANY EXCAVATION. A COPY OF THIS PERMIT SHALL BE AVAILABLE AT THE CONSTRUCTION SITE AT ALL TIMES.
3. ALL TRAFFIC CONTROL AND BARRICADING SHALL CONFORM TO PART VI OF THE MANUAL ON UNIFORM TRAFFIC CONTROL DEVICES, LATEST EDITION, AND THE CALIFORNIA STATE TRANSPORTATION AGENCY DEPARTMENT OF TRANSPORTATION STANDARD SPECIFICATIONS, CURRENT EDITION. NO STREET CLOSURES WILL BE ALLOWED WITHOUT PRIOR APPROVAL OF A TRAFFIC CONTROL PLAN BY CITY.
4. IT SHALL BE THE CONTRACTOR'S RESPONSIBILITY TO NOTIFY ALL ADJACENT PROPERTY OWNERS OF THE CONSTRUCTION ACTIVITY (ACCESS OR WATER SERVICE LIMITATIONS, DELAYS, AND/OR OUTAGES) AND THE SCHEDULE OF SUCH ACTIVITIES. NOTIFICATION SHALL BE MADE IN WRITING AND HAND DELIVERED TO EACH RESIDENT AND/OR PLACE OF BUSINESS.
5. MAINTAIN THE SITE IN A NEAT AND ORDERLY MANNER THROUGHOUT THE CONSTRUCTION PROCESS. ALL MATERIALS SHALL BE STORED WITHIN APPROVED CONSTRUCTION AREAS.
6. THE CONTRACTOR SHALL CALL UNDERGROUND SERVICE ALERT "CALL BEFORE YOU DIG" (1-800-227-2600) FORTY-EIGHT (48) HOURS PRIOR TO START OF CONSTRUCTION.
7. LOCATE AND/OR PROTECT ALL EXISTING AND PROPOSED PIPING, UTILITY POLES, TRAFFIC SIGNAL EQUIPMENT (BOTH ABOVE GROUND AND BELOW GROUND), STRUCTURES ADJACENT TO STREETS, AND ALL OTHER EXISTING IMPROVEMENTS THROUGHOUT CONSTRUCTION.
8. FINAL UTILITY INSPECTIONS WILL BE PERFORMED BY THE ENGINEER UNDER CONTRACT WITH THE CITY ACCORDING TO THE PROJECT SPECIFICATIONS. NOTE: THESE PROCEDURES REQUIRE SUBMITTAL OF RECORD DRAWING PRINTS BY THE CONTRACTOR AND 10 WORKING DAYS FOR THE ENGINEER TO PREPARE A FINAL PUNCH LIST. ALL CONDITIONS OF THE FINAL INSPECTION MUST BE COMPLETED PRIOR TO FINAL ACCEPTANCE BY THE CITY.
9. THE CONTRACTOR SHALL BE RESPONSIBLE FOR JOB SITE SAFETY DURING CONSTRUCTION, AND ALL WORK SHALL CONFORM TO PERTINENT SAFETY REGULATIONS AND CODES. FENCE AND/OR BARRICADE THE CONSTRUCTION AREA AS REQUIRED TO PROTECT ADJACENT SITES, VEHICULAR TRAFFIC AND PEDESTRIAN TRAFFIC. THE CONTRACTOR SHALL BE SOLELY AND COMPLETELY RESPONSIBLE FOR COMPLIANCE WITH ALL APPLICABLE PROVISIONS OF OSHA AND CAL/OSHA, IN THE CONSTRUCTION PRACTICES FOR ALL EMPLOYEES DIRECTLY ENGAGED IN THE CONSTRUCTION OF THIS PROJECT.
10. PURSUE WORK IN A CONTINUOUS AND DILIGENT MANNER TO ENSURE A TIMELY COMPLETION OF THE PROJECT.
11. ALL CONSTRUCTION SHALL BE CLOSELY COORDINATED WITH THE ENGINEER CONTRACTED BY THE CITY SO THAT THE QUALITY OF WORK CAN BE CHECKED FOR APPROVAL.
12. INCORPORATE ADEQUATE DRAINAGE PROCEDURES DURING THE CONSTRUCTION PROCESS TO ELIMINATE EXCESSIVE PONDING AND/OR EROSION.
13. CONSTRUCTION STAGING AREAS MAY BE DESIGNATED BY THE CITY WHO WILL INDICATE WHICH AREAS MAY BE USED WHEN AND FOR HOW LONG. CONTRACTOR SHALL BE RESPONSIBLE FOR THE SECURITY OF ALL EQUIPMENT AND MATERIALS.
14. THE CONTRACTOR SHALL BE RESPONSIBLE FOR PROTECTION OF ALL EXISTING SURVEY MONUMENTS AND SHALL REPLACE ANY MONUMENTS OBLITERATED OR DAMAGED DURING CONSTRUCTION AT HIS EXPENSE. REPLACEMENT SHALL BE PERFORMED BY A LICENSED PROFESSIONAL LAND SURVEYOR IN THE STATE OF CALIFORNIA.
15. NO FILL SHALL BE PLACED OR COMPACTED IN UNFAVORABLE WEATHER CONDITIONS. OVERLY WET, DRY OR FROZEN FILL SHALL NOT BE PLACED.
16. THE CONTRACTOR SHALL UTILIZE CONSTRUCTION TECHNIQUES TO MINIMIZE GRADING, REVEGETATION REMOVAL OR ANY OTHER SURFACE DISTURBANCE. CONTRACTOR WILL BE RESPONSIBLE FOR THE RESTORATION OF ALL GROUNDS INCLUDING, BUT NOT LIMITED TO, LANDSCAPING, SOD, CURBS, ASPHALT, DRIVEWAY PAVERS, RIP RAP, RETAINING WALLS, IRRIGATION PIPING AND LANDSCAPE LIGHTING TO EXISTING CONDITION. ALL COST FOR RESTORATION WILL BE INCLUDED IN THE BID ITEM REQUIRING RESTORATION.
17. THE CONTRACTOR SHALL PROVIDE AND MAINTAIN AT ALL TIMES EMERGENCY ACCESS TO THE PROJECT SITE TO THE SATISFACTION OF THE CITY.
18. ALL QUANTITIES SHOWN HEREIN ARE APPROXIMATE AND USED FOR PERMIT AND BOND PURPOSES ONLY. THEY SHALL NOT BE USED IN ANY WAY FOR BIDDING OR CONSTRUCTION. IT SHALL BE THE CONTRACTOR'S RESPONSIBILITY TO CONDUCT QUANTITY TAKE-OFFS FOR BIDDING AND CONSTRUCTION PURPOSES.

**PRIVATE PROPERTY NOTES**

1. CONTRACTOR AND INSPECTOR TO MEET, SCHEDULE, AND COORDINATE WITH INDIVIDUAL HOMEOWNERS A MINIMUM OF FIVE (5) WORKING DAYS PRIOR TO PRIVATE PROPERTY WORK.
2. CONTRACTOR TO INVESTIGATE, POTHOLE AND CONFIRM LOCATIONS OF EXISTING UTILITIES AND CONNECTION POINTS PRIOR TO WORK ON PRIVATE PROPERTY.
3. CONTRACTOR SHALL PROTECT EXISTING PROPERTY IMPROVEMENTS (I.E. FENCING, TREES, STRUCTURES, ANY LANDSCAPING NOT IDENTIFIED FOR REPLACEMENT, ETC.) AND REPLACE ANY DAMAGED ITEMS TO EQUAL OR BETTER CONDITION, AT CONTRACTOR'S EXPENSE.
4. WORK BEING PERFORMED WITHIN A DWELLING SHALL BE PERFORMED BY A LICENSED PLUMBER.

**MATERIAL TESTING:**

1. CONTRACTOR WILL CONTRACT WITH AND PROVIDE THIRD PARTY MATERIAL TESTING FOR THE FOLLOWING (PER PLANS AND SPECIFICATIONS):
  - COMPACTION OF ALL SOILS
  - CONCRETE
  - ASPHALT

**EROSION CONTROL NOTES:**

1. IT IS THE CONTRACTOR'S RESPONSIBILITY TO OBTAIN AND COMPLY WITH A STORMWATER POLLUTION PREVENTION PLAN REQUIRED UNDER CALIFORNIA'S INDUSTRIAL GENERAL PURSUANT TO CALIFORNIA'S NPDES PROGRAM IF REQUIRED. COMPLIANCE SHALL INCLUDE ALL REQUIREMENTS OF SWPPP PERMIT, SWPPP PLAN AND OTHER STATE AND LOCAL CODES. THE SWPPP PERMIT AND PLAN SHALL BE SUBMITTED TO THE ENGINEER FOR APPROVAL. APPROVED SWPPP PERMIT AND PLAN SHALL BE KEPT ON SITE DURING CONSTRUCTION.
2. THE CONTRACTOR SHALL INCORPORATE ADEQUATE DRAINAGE PROCEDURES DURING THE CONSTRUCTION PROCESS TO ELIMINATE EXCESSIVE EROSION OR PONDING AND TO PROTECT ADJACENT IMPROVEMENTS AND PROPERTIES FROM AN INFLUX OF RUNOFF OR SEDIMENT.
3. PRIOR TO CONSTRUCTION, CONTRACTOR SHALL:
  - STABILIZE ENTRANCES AND EQUIPMENT PARKING AREAS
  - INSTALL SEDIMENT CONTROL DEVICES
5. UPON COMPLETION OF THE PROJECT, WITHIN 15 DAYS OF COMPLETION OF ANY PHASE, THE CONTRACTOR SHALL:
  - REMOVE ALL GRADING AND CONSTRUCTION DEBRIS
  - REMOVE ALL TEMPORARY EROSION CONTROL MEASURES (AFTER PERMANENT MEASURES ARE ESTABLISHED)
  - REVEGETATE DISTURBED AREAS
6. EQUIPMENT AND VEHICLES SHALL NOT TRAVEL BEYOND THE LIMITS OF GRADING TO PREVENT DISRUPTION OF NATIVE VEGETATION.
7. STOCKPILED TOP SOILS AND VEGETATIVE STRIPPINGS ARE TO BE REAPPLIED TO DISTURBED SLOPE AREAS.
8. ALL AREAS DISTURBED AND LEFT UNDEVELOPED FOR A PERIOD OF MORE THAN 30 DAYS SHALL BE STABILIZED BY THE APPLICATION OF DUST PALLIATIVE.
9. CONCENTRATED CONSTRUCTION FLOWS SHALL BE CHANNELIZED TO TEMPORARY OR PERMANENT SEDIMENT TREATMENT FACILITIES. SEDIMENT LADEN WATER SHALL NOT ENTER THE NATURAL DRAINAGE OR PUBLIC STORM DRAIN SYSTEM.
10. DEWATERING EFFLUENT SHALL BE TREATED PRIOR TO DISCHARGE BY MEANS OF DEWATERING STRUCTURES (e.g. STRAW BALE FILTER/SILT FENCE PIT, GRAVEL FILTER, ETC.).

**DUST CONTROL NOTES:**

1. CONTRACTOR IS RESPONSIBLE FOR PREVENTING CONTROLLABLE FUGITIVE DUST FROM THE PROJECT'S DISTURBED AREAS TO BECOME AIRBORNE ON A 7-DAY/WEEK, 24-HOUR/DAY BASIS FROM COMMENCEMENT OF PROJECT TO FINAL COMPLETION.
2. WATER SHALL BE APPLIED TO THE ROADWAY AND EXPOSED DIRT AREAS BY WATER TRUCK OR WATER HOSE TO CONTROL FUGITIVE DUST SO LONG AS NO DISCHARGE OF WASTE MATERIAL TO SURFACE DRAINAGE OCCURS.
3. REGULAR VACUUM OR SWEEPING OF ROADS WHERE CONSTRUCTION IS OCCURRING WILL BE PERFORMED AT LEAST DAILY AND MORE OFTEN IF NECESSARY TO REMOVE DIRT OR WASTE RESULTING FROM THE CONSTRUCTION.
4. ALL TRUCKS IMPORTING OR EXPORTING DIRT, ROCK OR OTHER FILL MATERIALS SHALL PREVENT SPILLAGE OR LOSS OF BULK MATERIAL FROM HOLES OR OTHER OPENINGS IN THE CARGO COMPARTMENT FLOOR, SIDES, AND/OR TAILGATE. ALL HAUL TRUCKS MUST BE COVERED WITH A TARP OR OTHER SUITABLE CLOSURE; OR BULK MATERIALS MUST CONTAIN ENOUGH MOISTURE AND/OR DUST SUPPRESSANT TO PREVENT FUGITIVE DUST EMISSIONS DURING TRANSPORT; OR LOAD ALL TRUCKS SUCH THAT THE FREEBOARD IS NOT LESS THAN SIX (6) INCHES.
5. ALL PROJECT RELATED VEHICLES SHALL PARK ON EXISTING PAVED SURFACES OR EXISTING COMPACTED ROAD SHOULDERS.

FILE SPEC: P:\Client Projects\Loyalton, City of 442\1678 Beckwith Road Pavement Repair\5.0 Drawings\5.2 DWG\G-Sheets\_1678.dwg  
PLOT DATE: Jan 07, 2019 - 9:19am

DATE	APP	BY	DESCRIPTION

ONE INCH AT FULL SCALE

1678				
JOB NO.	DATE	SCALE	DESIGNED	DRAWN

**FARR WEST ENGINEERING**  
 5510 LONGLEY LANE  
 RENO, NEVADA 89511  
 PHONE: (775) 851-4788  
 FAX: (775) 851-0766  
 FARRWESTENGINEERING.COM

SIGNED: X/XX/19

CITY OF LOYALTON  
 BECKWITH ROAD PAVEMENT REPAIR  
 GENERAL NOTES  
 SIERRA COUNTY  
 CALIFORNIA

**60% SUBMITTAL**  
 FOR REVIEW ONLY  
 NOT FOR CONSTRUCTION

SHEET NUMBER  
**G1.2**  
 2 OF 5

FILE SPEC: P:\Client Projects\Location, City of 442\1678 Beckwith Road Pavement Repair\5.0 Drawings\5.2 DWG\G-1.3 Sheets\_1678.dwg  
 PLOT DATE: Jun 07, 2019 - 8:18am

**ABBREVIATIONS:**

ABAN - ABANDON	MAX - MAXIMUM
AIP - ABANDONED IN PLACE	MIN - MINIMUM
AGG - AGGREGATE	MTE - MATCH TO EXISTING
ALT - ALTERNATE	MUE - MUNICIPAL UTILITY EASEMENT
A - ANODE, GAS	ND - NUMBER
ACP - ASBESTOS CEMENT PIPE	N/O - NORTH OF
AC - ASPHALTIC CONCRETE	NTS - NOT TO SCALE
AVE - AVENUE	OC - ON CENTER
BC - BACK OF CURB	OME - OVERHEAD ELECTRIC
BCR - BACK OF CURB RADIUS	OD - OUTSIDE DIAMETER
BEG - BEGN	PG - PAD GRADE
BY - BUTTERFLY VALVE	PHP - PLASTIC HIGH PRESSURE
BVC - BEGINNING OF VERTICAL CURVE	PVMT - PAVEMENT
BW - BENCH MARK	PI - POINT OF INTERSECTION
BDRY LINE - BOUNDARY LINE	PRC - POINT OF REVERSE CURVE
BW - BACK OF SIDEWALK	PC - POINT OF CURVE
CATV - CABLE TELEVISION	PT - POINT OF TANGENCY
C-C - CENTER TO CENTER	PCC - POINT OF COMPOUND CURVE
CL - CENTER LINE	PCC, CONC - PORTLAND CEMENT CONCRETE
CO - CLEAN OUT, SEWER	PP - POWER POLE
COMM - COMMERCIAL	P - POWER
CONC, PCC - CONCRETE	R - PROPERTY LINE
CONST - CONSTRUCTION OR CONSTRUCT	PROP - PROPOSED
COR - CORNER	PL-G - PLASTIC GAS
CMP - CORRUGATED METAL PIPE	PRC - POINT OF REVERSE CURVE
CSAP - CORRUGATED STEEL ARCH PIPE	PB - PULL BOX
CSP - CORRUGATED STEEL PIPE	PUE - PUBLIC UTILITY EASEMENT
C&G - CURB & GUTTER	PVI - POINT OF VERTICAL INTERSECTION
CP - CAST IRON PIPE	PVC - POLYVINYL CHLORIDE PIPE
COL - COLUMN	ROF - RATE OF FLOW
CU YD, CY - CUBIC YARD	RP - RADIUS POINT
CU FT, CF - CUBIC FOOT	R - RADIUS
CULV - CULVERT	RR - RAILROAD
CF - CURB FACE	REINF - REINFORCED
DC - DEPRESSED CURB	RC - REINFORCED CONCRETE
DEPT - DEPARTMENT	RCB - REINFORCED CONCRETE BOX
DIA - DIAMETER	RELOC - RELOCATE
DRY - DRIVEWAY	RCP - REINFORCED CONCRETE PIPE
DI - DROP INLET	R/CA - RESTRAINED FLANGE COUPLING ADAPTER
DP - DUCTILE IRON PIPE	RJ - RESTRAINED JOINT
DWH - DROP MANHOLE	RT - RIGHT
ESMT - EASEMENT	R/W, ROW - RIGHT OF WAY
E/O - EAST OF	RD - ROAD
EP - EDGE OF PAVEMENT	S-G - STEEL GAS
EO - EDGE OF OIL	SS - SANITARY SEWER
E, EL, ELEC - ELECTRIC	SSFM - SANITARY SEWER FORCE MAIN
EM - ELECTRIC METER	SS1 - STAINLESS STEEL
ELEV - ELEVATION	SHT - SHEET
EMBK - EMBANKMENT	S/O - SOUTH OF
ECR - END OF CURB RETURN	SW - SIDEWALK
EC - END OF CURVE	SQ FT, SF - SQUARE FOOT
FIBER - FIBER OPTIC LINE	SQ YD, SY - SQUARE YARD
EBS - CATHODE PROTECTION BOND STATION	STA - STATION
ETS - CATHODE PROTECTION TEST STATION	SHP - STEEL HIGH-PRESSURE PIPE
EVC - END OF VERTICAL CURVE	SD - STORM DRAIN
EXIST, EX - EXISTING	STD - STANDARD
FF - FINISHED FLOOR	STRUCT - STRUCTURAL OR STRUCTURE
FDC - FIRE DEPARTMENT CONNECTION	SURV - SURVEY
FT - FEET OR FOOT	SL - STREETLIGHT
FG - FINISH GRADE	T, TELE - TELEPHONE
FA - FIRE ALARM	TEMP - TEMPORARY
FH - FIRE HYDRANT	TBA - TO BE ADJUSTED
FL - FLOW LINE	TBR - TO BE REMOVED
FPVC - FUSED POLYVINYL CHLORIDE PIPE	TC - TOP OF CURB
G - GAS	TMH - TOP OF MANHOLE
GALV - GALVANIZED	TP - TOP OF PIPE
GM - GAS METER	TS - TRAFFIC SIGNAL
GR - GAS PRESSURE REGULATOR	TSC - TRAFFIC SIGNAL CONDUIT
GB - GRADE BREAK	TSI - TRAFFIC SIGNAL INTERCONNECT
GUT - GUTTER	TRANS - TRANSITION
HDWL - HEADWALL	TW - TOP OF WALL
HP - HIGH POINT	TYP - TYPICAL
ID - INSIDE DIAMETER	UG - UNDERGROUND
IN - INCH	UGE - UNDERGROUND ELECTRICAL
INT - INTERSECTION	UG-UT - UNDERGROUND UTILITIES
INV - INVERT	VAR - VARIABLE
ISL - ISLAND	VERT - VERTICAL
JB - JUNCTION BOX	VC - VERTICAL CURVE
LAT - LATERAL	VG - VALLEY GUTTER
LOC - LENGTH OF CURB	VCP - VITRIFIED CLAY PIPE
LS - LANDSCAPE	W, WTR - WATER
LT - LEFT	WM - WATER METER
LF - LINEAR FEET	W/O - WEST OF
LP - LOW POINT	YD - YARD
MH - MANHOLE	

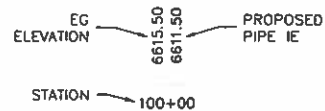
**EXISTING LEGEND:**

W	WATERLINE
FW	FIRE WATERLINE
IRR	IRRIGATION
EX SS	SANITARY SEWER
SSFM	SANITARY SEWER FORCEMAIN
EX SD	STORM DRAIN
E	ELECTRICAL
OHP	OVER HEAD POWER
T	TELEPHONE/COMM LINE
FO	FIBER OPTIC LINE
G	GAS MAIN/LATERAL
C	CONDUIT
---	EDGE OF PAVEMENT
---	APPROX. RIGHT OF WAY
---	EASEMENT
X	FENCE WIRE
---	DITCH/DRAINAGE CHANNEL
---	CONTOUR LINE
⊗	VALVE
⊙	VALVE
⊕	UTILITY VAULTS/BOXES (UG ELECTRIC, TELEPHONE, FIBER OPTICS AND CABLE TV)
⊖	WATER METER
⊕	FIRE HYDRANT
⊕	UTILITY POLE
⊕	UTILITY POLE AND ANCHOR
⊕	LIGHT POLE
⊕	SIGN
○	MANHOLE
○	CLEANOUT
▭	BUILDING
⊙	TREES AND VEGETATION
⊙	MAILBOX
⊙	SANITARY SEWER MANHOLE

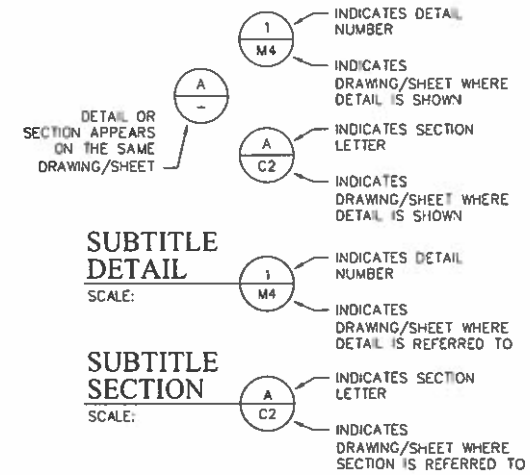
**PROPOSED LEGEND:**

---	CONTOUR LINE
---	CONSTRUCTION CONTROL LINE
⊕	SANITARY SEWER MAIN AND MANHOLE
XX	FENCE
---	CONSTRUCTION BARRIER FENCE
---	DRAINAGE SWALE
---	GRADE BREAK
▨	INDICATES STRUCTURES, EQUIPMENT, AND PIPE TO BE DEMOLISHED OR ABANDONED
▨	PAVEMENT SAWCUT
▨	AC PAVEMENT PATCH
▨	CONCRETE REPAIR
---	SS LATERAL AND CLEANOUT

**PROFILE KEY**



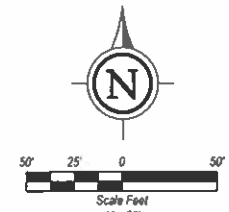
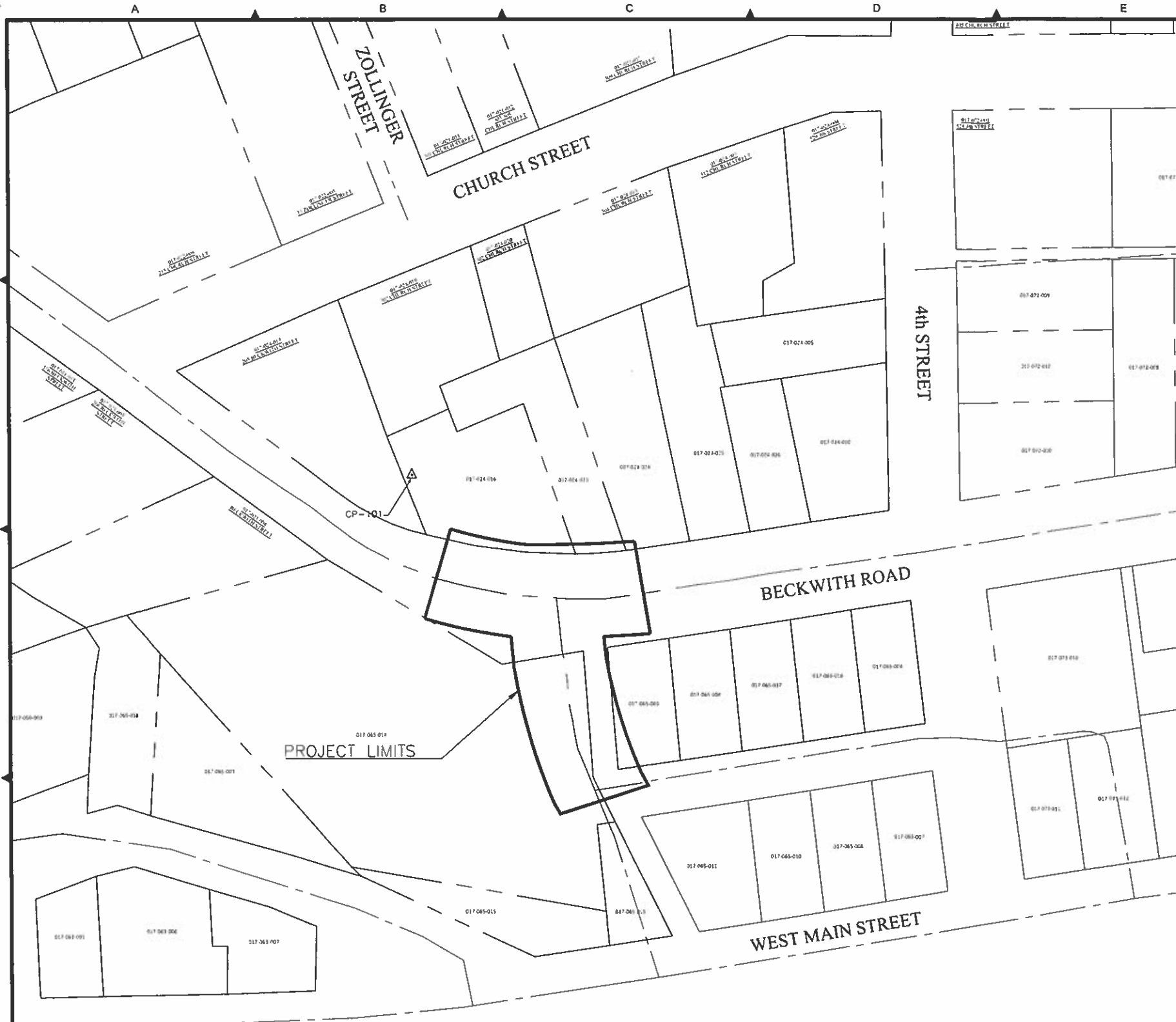
**DETAIL AND SECTION DESIGNATION:**



**60% SUBMITTAL**  
 FOR REVIEW ONLY  
 NOT FOR CONSTRUCTION

DATE	
APP	
BY	
DESCRIPTION	
REVISION	
JOB NO. 1678	DATE: MAR 2019
SCALE: AS SHOWN	DESIGNED: AK
DRAWN: JIM	CHECKED: JKE
<b>FARR WEST ENGINEERING</b> 5510 LONGLEY LANE RENO, NEVADA 89511 PHONE: (775) 851-4788 FAX: (775) 851-0766 FARRWESTENGINEERING.COM	
SIGNED: X/XX/19	
CITY OF LOYALTON	CALIFORNIA
BECKWITH ROAD PAVEMENT REPAIR	ABBREVIATIONS & LEGENDS
SIERRA COUNTY	
SHEET NUMBER	
<b>G1.3</b>	
3 OF 6	

FILE SPEC: P:\Client Projects\Loyalton, City of 447\1678 Beckwith Road Pavement Repair\5.0 Drawings\5.2 DWG\G-Sheets\_1678.dwg  
 PLOT DATE: Jun 07, 2019 - 9:19am



**SURVEY CONTROL TABLE**

PT#	NORTHING	EASTING	ELEVATION	DESCRIPTION
CP-101	2377533.36	7055085.05	4941.31	SET 5/8" REBAR W/PLASTIC CAP MARKED 'FWE CONTROL'
CP-102	2377624.67	7056255.76	4948.33	SET 5/8" REBAR W/PLASTIC CAP MARKED 'FWE CONTROL' (NOT SHOWN)
CP-103	2377587.34	7054671.19	4937.79	SET 5/8" REBAR W/PLASTIC CAP MARKED 'FWE CONTROL' (NOT SHOWN)

△ SURVEY CONTROL POINT

**BASIS OF ELEVATIONS:**

USC & GS BRASS CAP STAMPED "N178" AT THE ENTRANCE TO THE SIERRA COUNTY SOLID WASTE LAND FILL SITE 1.6KM FROM LOYALTON. PUBLISHED NAVD 88 ELEVATION = 5022.63

**BASIS OF BEARINGS:**

CALIFORNIA STATE PLANE COORDINATE SYSTEM, ZONE 2 (0402) NAD 83(2011), BEING THE GRID BEARING BETWEEN NGS STATION N178, AND NGS STATION HERRIOT, AND TAKEN AS N89°19'55"W. THE COORDINATES SHOWN HEREON ARE GRID VALUES.

REVISION	DESCRIPTION	BY	DATE

JOB NO:	1678
DATE:	MAY 2019
SCALE:	AS SHOWN
DESIGNED:	AK
DRAWN:	AK
CHECKED:	AK

**FARR WEST ENGINEERING**  
 5510 LONGLEY LANE  
 RENO, NEVADA 89511  
 PHONE (775) 851-4788  
 FAX (775) 851-0766  
 FARRWESTENGINEERING.COM

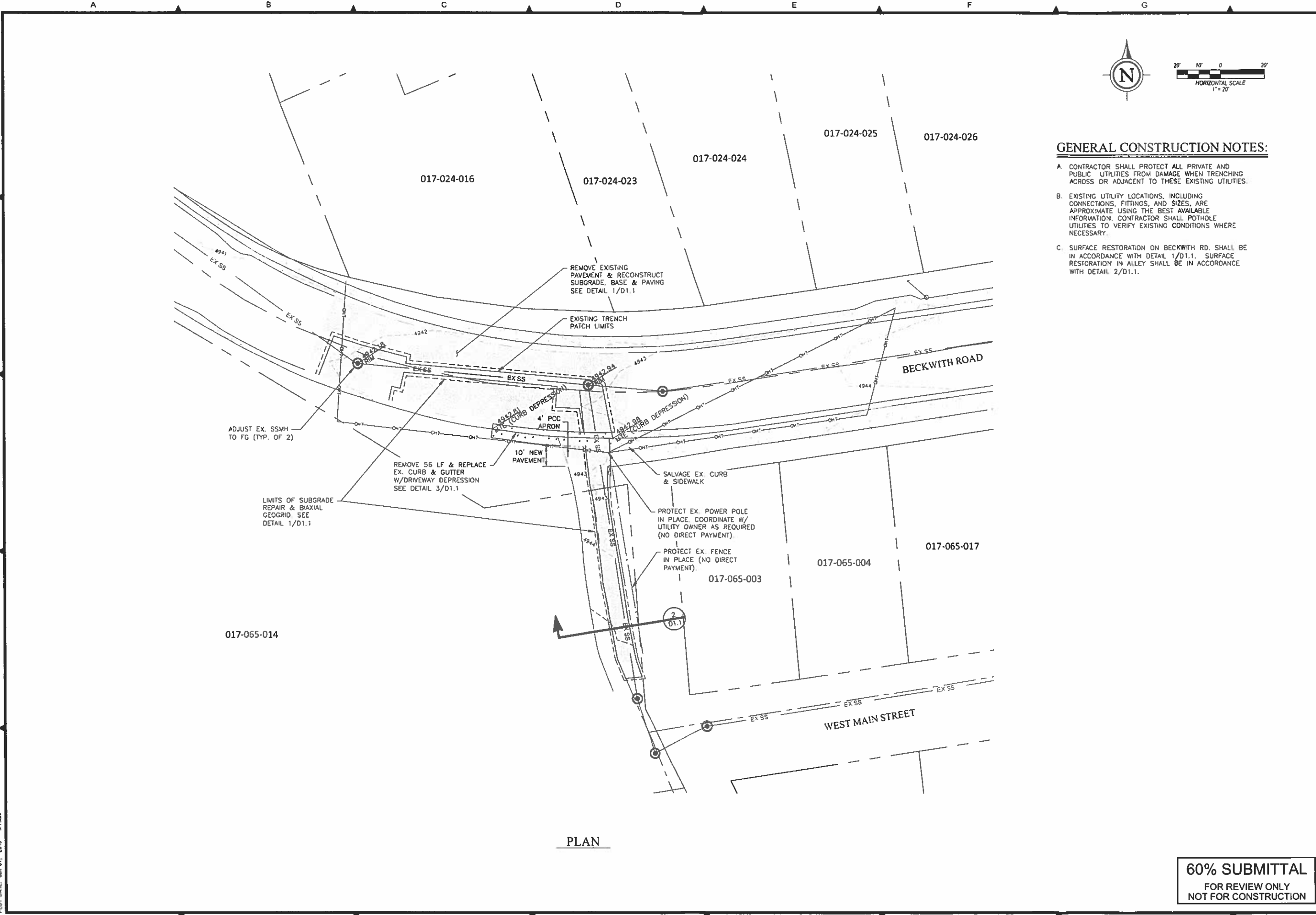
SIGNED:  
 X/XX/19

CITY OF LOYALTON  
**BECKWITH ROAD PAVEMENT REPAIR**  
 KEY MAP, OVERALL SURVEY & BASELINE CONTROL  
 SIERRA COUNTY CALIFORNIA

**60% SUBMITTAL**  
 FOR REVIEW ONLY  
 NOT FOR CONSTRUCTION

SHEET NUMBER  
**G1.4**  
 4 OF 6

FILE SPEC: P:\Client\Project\Loyalton, City of 442\1678 Beckwith Road Pavement Repair\5.0 Drawings\5.2 DMC\C1-Sheet\_1678.dwg  
 PLOT DATE: Jun 07, 2019 9:15am



PLAN

**GENERAL CONSTRUCTION NOTES:**

- A. CONTRACTOR SHALL PROTECT ALL PRIVATE AND PUBLIC UTILITIES FROM DAMAGE WHEN TRENCHING ACROSS OR ADJACENT TO THESE EXISTING UTILITIES.
- B. EXISTING UTILITY LOCATIONS, INCLUDING CONNECTIONS, FITTINGS, AND SIZES, ARE APPROXIMATE USING THE BEST AVAILABLE INFORMATION. CONTRACTOR SHALL POTHOLE UTILITIES TO VERIFY EXISTING CONDITIONS WHERE NECESSARY.
- C. SURFACE RESTORATION ON BECKWITH RD. SHALL BE IN ACCORDANCE WITH DETAIL 1/D1.1. SURFACE RESTORATION IN ALLEY SHALL BE IN ACCORDANCE WITH DETAIL 2/D1.1.

DATE	APP	BY	DESCRIPTION	REVISION

ONE INCH AT FULL SCALE:

1678	DATE	SCALE	DESIGNED	DRAWN	CHECKED

**FARR WEST ENGINEERING**  
 5510 LONGLEY LAKE  
 RENO, NEVADA 89511  
 PHONE: (775) 851-4788  
 FAX: (775) 851-0766  
 FARRWESTENGINEERING.COM

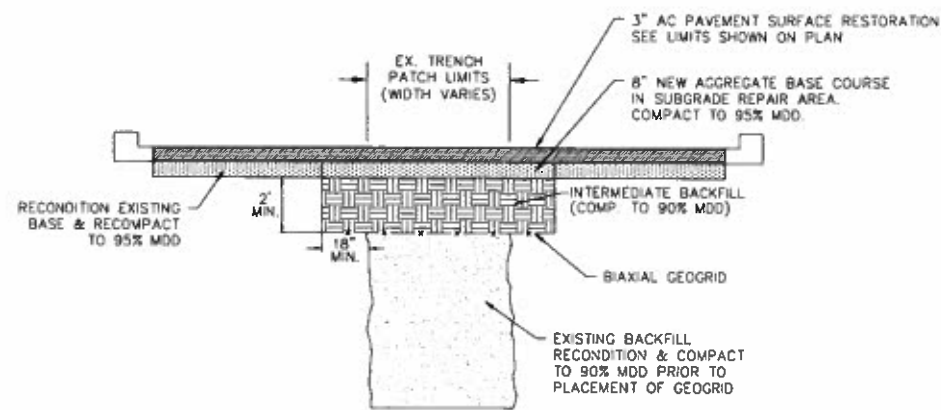
SIGNED: *[Signature]*  
 X/XX/19

CITY OF LOYALTON  
 BECKWITH ROAD PAVEMENT REPAIR  
 PLAN SHEET

SIERRA COUNTY  
 CALIFORNIA

SHEET NUMBER  
**C1.1**  
 5 OF 6

60% SUBMITTAL  
 FOR REVIEW ONLY  
 NOT FOR CONSTRUCTION



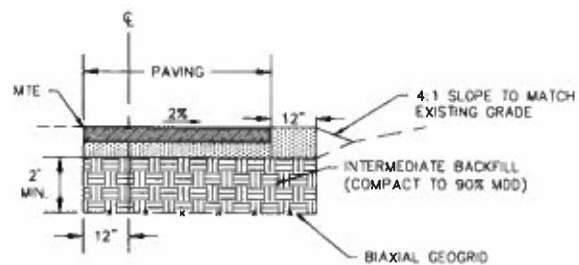
**NOTES:**

1. MATERIAL CLASSIFICATION PER PROJECT SPECIFICATIONS.
2. FOR THE PURPOSE OF PAYMENT; EXCAVATION AND BACKFILL QUANTITIES ARE BASED ON THESE STANDARD DRAWINGS, AND NO ADDITIONAL COMPENSATION WILL BE MADE. SHORING OR SLOPED CUT SLOPES MAY BE NECESSARY, BUT THERE WILL BE NO ADDITIONAL PAYMENT. ALL EXCAVATIONS SHALL CONFORM TO THE LATEST O.S.H.A. REQUIREMENTS.
3. COMPACTION VALUES CAN BE MODIFIED BY CITY OF LOYALTON ENGINEER.

**TRENCH EXCAVATION & BACKFILL DETAIL**

SCALE: NTS

1  
TYP



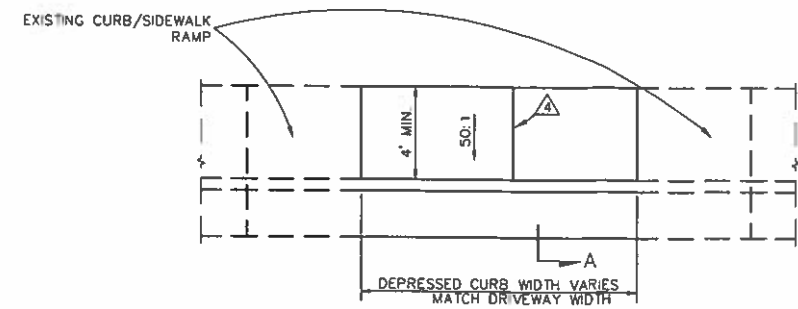
**NOTES:**

1. MATERIAL CLASSIFICATION PER PROJECT SPECIFICATIONS.
2. FOR THE PURPOSE OF PAYMENT; EXCAVATION AND BACKFILL QUANTITIES ARE BASED ON THESE STANDARD DRAWINGS, AND NO ADDITIONAL COMPENSATION WILL BE MADE. SHORING OR SLOPED CUT SLOPES MAY BE NECESSARY, BUT THERE WILL BE NO ADDITIONAL PAYMENT. ALL EXCAVATIONS SHALL CONFORM TO THE LATEST O.S.H.A. REQUIREMENTS.
3. COMPACTION VALUES CAN BE MODIFIED BY CITY OF LOYALTON ENGINEER.
4. PAVEMENT STRUCTURAL SECTION TO MATCH BECKWITH RD.

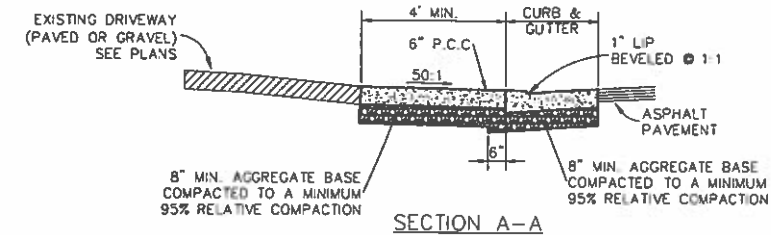
**ALLEY TRENCH EXCAVATION AND BACKFILL DETAIL**

SCALE: NTS

2  
TYP



PLAN



SECTION A-A

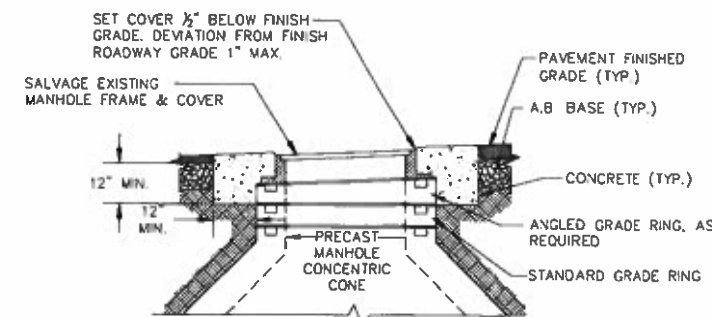
**NOTES:**

1. ALL P.C.C. CURB, GUTTER, SIDEWALK, AND VALLEY GUTTER SHALL BE CLASS C CONCRETE UNLESS OTHERWISE SPECIFIED (4000 PSI).
  2. AGGREGATE BASE MATERIAL SHALL CONFORM TO THE SPECIFICATIONS AND BE COMP. TO A MIN 95% MAX. DRY DENSITY.
  3. ALL ADJACENT CONCRETE REMOVAL SHALL BE TO NEAT SAW CUT LINES AT RIGHT ANGLES. DOWEL INTO EXISTING ADJACENT CONCRETE DRIVEWAY APPROACH OR SIDEWALK WITH (2) No. 4 REINFORCEMENT BARS EQUALLY SPACED ACROSS WIDTH "W". DOWELS SHALL PENETRATE A MINIMUM OF 4" INTO EXISTING CONCRETE.
- △ WEAKENED PLANE JOINTS SHALL BE CONSTRUCTED AT 5 FT INTERVALS IN SIDEWALK/DRIVEWAY APRON AND 10 FT INTERVALS IN CURB AND GUTTER.

**PCC DRIVEWAY APRON**

SCALE: NTS

3  
TYP



**TYPICAL MANHOLE LID CONFIGURATIONS DETAIL**

SCALE: NTS

4  
TYP

DATE	BY	APP

REVISION	DESCRIPTION

JOB NO. 1678	DATE: MAY 2019	SCALE: AS SHOWN	DESIGNED: AK	DRAWN: TAI	CHECKED: KE
--------------	----------------	-----------------	--------------	------------	-------------

**FARR WEST ENGINEERING**  
 5510 LONGLEY LANE  
 RENO, NEVADA 89511  
 PHONE: (775) 851-4788  
 FAX: (775) 851-0786  
 FARRWESTENGINEERING.COM

SIGNED: X/XX/19  
 CALIFORNIA

CITY OF LOYALTON  
 BECKWITH ROAD PAVEMENT REPAIR  
 DETAILS  
 SIERRA COUNTY

SHEET NUMBER  
**D1.1**  
 6 OF 6

**60% SUBMITTAL**  
 FOR REVIEW ONLY  
 NOT FOR CONSTRUCTION

FILE SPEC: P:\Client Projects\Loyalton\_City of 442\1678 Beckwith Road Pavement Repair\5.0 Drawings\5.2 DWG\DJ1-Sheets\_1678.dwg  
 PLOT DATE: Jun 07, 2019 9:19am